

Where Excellence Begins



Sapphire
Education

Welcome

Our Vision 4

Why Choose us? 6

Our Location

University of Bath 8

Future Scholars

Discover & Grow 10

Pre-University Scholars

Explore Your Subject 12

What's Included?

Student Support 14

A Day at Sapphire 15

Beyond the Classroom 16

Next Steps

Outcomes & Impact 18

Dates, Courses & Fees 19

Contact Information 20



Where Ambition Meets Opportunity

Sapphire Education is for curious, ambitious students who want more than a typical summer school. We offer academically rich, culturally immersive courses that give clarity, confidence and a first step toward future possibilities.

Students explore their subject in depth, applying ideas through real experiences and hands-on challenges. Whether pitching a start-up idea in a business challenge, exploring AI alongside university academics, or hearing directly from professionals shaping real-world industries, every moment is designed with purpose.

Set at the University of Bath, students experience a modern, high-performing university environment that supports both academic focus and personal growth. Students leave feeling more prepared for what comes next, whether that's university, career exploration or simply knowing themselves a little better.

This is a summer of purpose, exploration and growth. A focused, fulfilling experience that opens doors and leaves students feeling inspired, more confident and clear about their next steps.

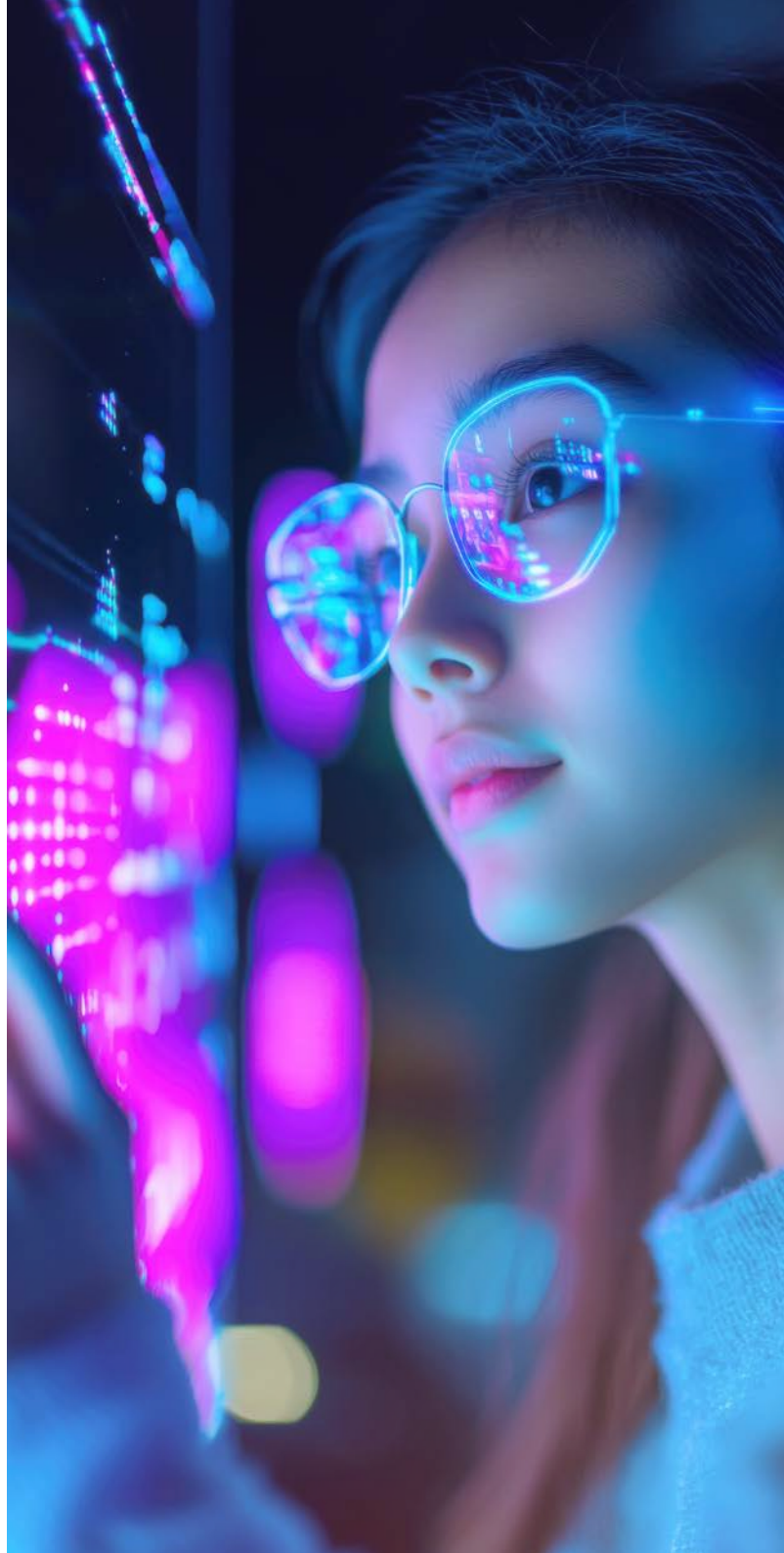
Created by a team with decades of experience in international education and university preparation.

 Our Vision

Built for the Curious. Designed for the Future.

Sapphire is designed for students who want more than a typical summer school. Every part of the programme, from the way we teach to the way we care, is built with intention and impact in mind.

We bring together educators, mentors and professionals who understand the importance of clarity, relevance and real-world thinking. The result is a summer that's structured, enriching and truly student-centred.





Clarity
Helping students
find their path and
own their next steps



Connection
Fostering
friendships, trust
and belonging

**What Shapes
the Sapphire
Experience**

Confidence
Building voice,
independence and
self-belief



Culture
Creating space for
global perspectives
and shared
experience



 Why Choose Us?

Built Around What Matters

What drives us? The qualities that shape futures.

We don't believe in passive learning. We believe in giving students something to lean into, something that opens doors, sparks ideas and changes how they think.

Here's what we build into everything we do:

Ambition

We encourage students to set bold goals and develop the mindset to pursue them — through challenge, creativity and guided support.

Curiosity

We nurture inquisitive thinking with future-focused topics, real-world challenges and space to explore what excites them.

A Future-Focused Mindset

We build lasting skills: resilience, adaptability, leadership and critical thinking. Students leave more prepared — and more confident in what comes next.



What Makes Sapphire Different

At Sapphire, it's not just about what students learn, it's how they're supported while they grow. We combine academic challenge with genuine care, helping each student move forward with more direction, confidence and purpose.



Exceptional learning environments

Our programmes take place at the University of Bath, one of the UK's most inspiring university environments.



University & career insight

From academic skills to guest speakers and mentoring, students gain real direction and confidence for what comes next.



High staff ratio & 24/7 support

With a strong team on site day and night, students are known, supported and looked after every step of the way.



A global community

Students from across the world share ideas, build friendships and leave with broader perspectives.



Future-focused teaching

Courses are designed by curriculum writers with deep subject knowledge and real-world perspective, delivered by passionate teachers who bring fresh, relevant insight.



Challenge with care

Every student is encouraged to step up, but never left behind. With small groups and guided feedback, they feel motivated, supported and able to grow.

Location

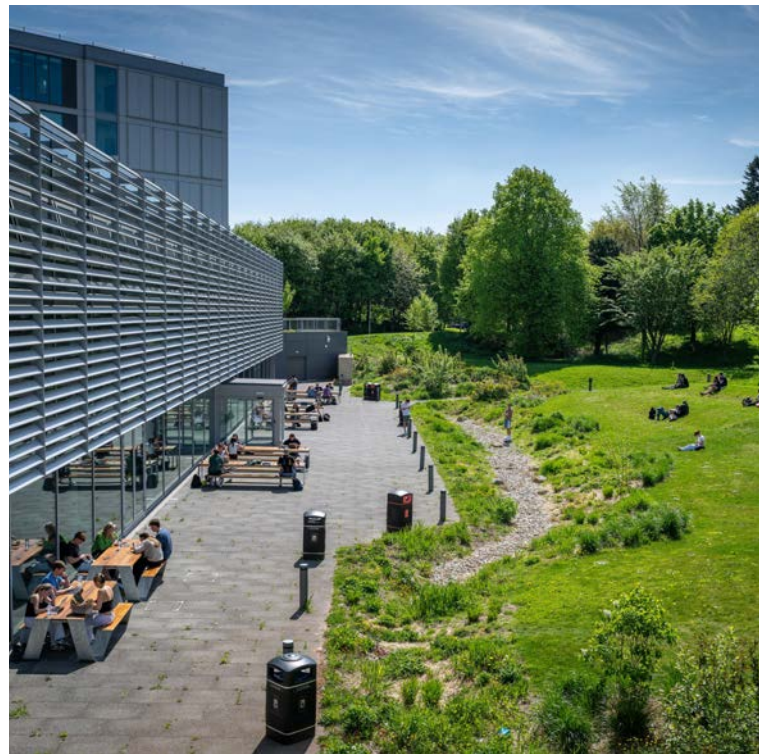
University of Bath

Set on a green hilltop campus overlooking the historic city, the University of Bath provides a cutting-edge learning environment with high-spec labs, lecture halls and innovation spaces.

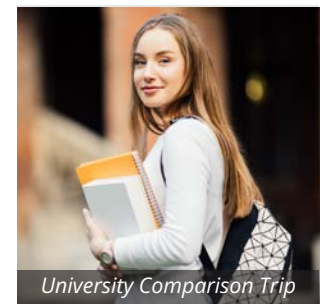
Sapphire students stay in premium en-suite university accommodation and use professional-standard teaching spaces, from engineering labs and design studios to bright, purpose-built lecture halls. The campus is designed to give students a sense of independence, with strong on-site support throughout.

Courses in Bath are delivered in partnership with the university and shaped with input from academic faculty. The result is a programme that feels current, challenging and academically rich — giving students a real insight into university life and learning.

Outside the classroom, students explore the city's heritage, from Roman bathhouses to Georgian crescents, making space for reflection, discovery and cultural connection in one of the UK's most beautiful cities.



Local Highlights



Quick Facts



Ranked No.8 in Complete University Guide 2026



Known for excellence in Engineering, Business & Technology



Campus set on 200 acres of parkland with panoramic views



State-of-the-art labs, innovation centres and modern lecture spaces



Easy access to UNESCO World Heritage city centre



Future Scholars (12–14)

Discover & Grow

Our Future Scholars programme is designed for younger students aged 12–14 who are beginning to explore their interests and build academic confidence. These courses are hands-on, engaging and structured to support early curiosity while introducing real-world concepts in an age-appropriate way.

Unlike our older student programmes, Future Scholars is less about subject specialism and more about discovery. We introduce key concepts through structured sessions that build confidence, collaboration and early subject understanding. With strong staff support, inspiring settings and a global community around them, students leave more confident, socially connected and open to the possibilities ahead.

This programme is designed to run over a two-week period. To get the most from the experience, we recommend a minimum English level of B1.



Our Future Scholars Courses

STEM Pioneers

From coding foundations to hands-on engineering challenges, this course introduces key STEM principles through structured, engaging activities. Students explore real-world problems, test ideas, and gain insight into how science and technology shape the world around them.

They'll experiment with practical tasks in areas such as design, robotics and basic programming, all guided by experienced staff. Sessions are designed to build curiosity, collaboration and confidence, helping students connect STEM learning to everyday life in a meaningful, motivating way.



Business Pioneers

This course gives younger students a dynamic introduction to business thinking. They explore how ideas become products, how teams solve problems, and what it means to take initiative and lead.

Through guided projects and creative challenges, students begin to develop early communication and leadership skills, while building confidence in presenting and working collaboratively. The course balances creativity with critical thinking, encouraging students to explore entrepreneurial concepts in a structured, age-appropriate way.

Pre-University Scholars (14-18)

Explore Your Subject

Our Pre-University Scholars programme is designed for students aged 14-18 who are curious about the world and eager to take their learning further. Each course blends academic insight with practical application, helping students develop new skills and make informed choices about what comes next.

Courses are taught in small groups by passionate, knowledgeable staff. Sessions are interactive, challenge-based and forward-thinking, giving students a strong academic foundation and the confidence to take their next steps.

This programme is designed to run over a two-week period. To get the most from the experience, we recommend a minimum English level of B2.



Course Pathways

Business, Entrepreneurship, and Start-Up

Develop your commercial mindset through real case studies, creative challenges and business model design. Work in teams to pitch your own start-up concept to a live panel.



Computer Science, AI, and Machine Learning

Explore algorithms, data sets and emerging technologies in a course designed to reflect the latest in digital innovation. Perfect for curious coders, future developers or anyone interested in the future of tech.



Engineering, Design, and Sustainability

Solve real problems through design thinking and engineering principles. From prototypes to environmental impact, this course is for students who want to build, improve and make a difference.



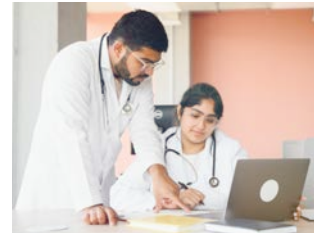
Psychology, Marketing, and Leadership

Look into how people think, connect and influence. This course combines behavioural science with creative strategy, helping students understand both themselves and the world around them.



Medicine, Health, and Innovation

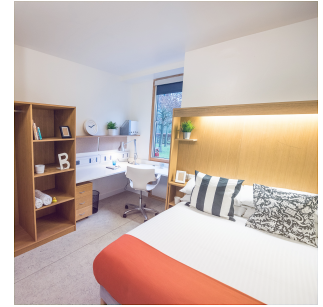
Explore how medicine blends science, ethics, and innovation to shape healthcare future, from anatomy and genetics to global health and technology.



What's Included

Everything They Need. All in One Place.

From arrival, students are supported through a safe, enriching summer. Staff guide them in class, on trips, and during downtime, helping them to thrive.



Tuition

40+ hours of subject learning and academic enrichment, taught in small groups by passionate teachers.



Guest Speakers & Q&A Sessions

Talks and panels with professionals, university students and subject specialists.



Accommodation

Premium single bedrooms with en-suites within secure University of Bath campus accommodation.



Masterclasses & Confidence-Building

Focused sessions on public speaking, future planning, presentation skills and university preparation.



Meals

Three meals per day plus evening snacks, with dietary needs catered for.



Evening Socials & Wellbeing

Structured social time, reflection space and daily check-ins with staff.



Excursions & Cultural Visits

Full-day weekend excursions and multiple local activities, designed to complement the academic and cultural experience.



High staff Ratio & 24/7 Support

On-site friendly team available throughout the day and evening.

A Day at Sapphire

Every Sapphire day is designed to balance academic focus with creativity, culture and connection. Students follow a structured schedule that gives the day purpose and variety, but no two days feel the same.

From immersive learning to evening socials and quiet reflection, the experience runs from morning to night. Built-in time to rest and reconnect creates a supportive, energising atmosphere.

Sample Daily Schedule

<i>Time</i>	<i>Activity</i>
07:30	Breakfast & Morning Meet
09:00	Masterclass Sessions
10:30	Morning Break
11:00	Core Subject Seminar
12:30	Lunch on Campus
14:00	Guest Talk or Workshop Activity
15:30	Career Guidance Session
16:00	Cultural Visit or Local Tour
18:00	Dinner / House Catch-up
19:00	Reflection & Journaling
19:30	Cinema Night
22:00	House Wind Down

Weekends

Full-day excursions for exploration, connection and recharge.

Standout Experiences



Real World Immersion

Visit labs, studios, workplaces, museums or institutions to meet professionals and explore areas of interest.



University/ Private School Visits

Visit other leading UK universities to compare environments and support future decision-making.



Career Guidance

Sessions to build confidence on public speaking, teamwork and planning for what's next.



Mini Challenges

Each course ends with a fast-paced group task that brings learning to life.

Beyond the Classroom

At Sapphire, the learning doesn't stop when lessons end. Every part of the day has been carefully designed to stretch the imagination, build confidence and give students a sense of belonging.

Students take part in a rich programme of activities that encourage exploration, reflection and personal growth, all while having fun and making connections that often last long after summer ends.

Industry Speakers and Q&A Sessions

Hear directly from people working in cutting-edge fields, from AI start-ups to global marketing firms. Students have the chance to ask questions, explore careers, and connect learning to real-world impact.

Masterclasses and University Prep

From confidence-building to interview skills, these practical sessions help students prepare for the future with clarity and intention.

Cultural Excursions

Explore historic cities, world-famous attractions and local highlights. From iconic landmarks to Roman heritage sites, every excursion brings the character and history of each city to life.

Evening Socials

Each evening brings the chance to relax, reset and connect. Students take part in engaging activities with staff and peers. From quiz nights and team challenges to relaxed social time that builds friendships and community. These moments offer balance, laughter and a break from the fast pace of the day.

Reflection & Journal Time

Dedicated time each evening for students to pause, write and reflect. This is key to help them process what they've learned and build confidence in their voice.



More than a
course.
A whole
experience.



What Students Leave With

This isn't just about what students learn, it's about how they grow. In two weeks, they leave with more focus, confidence and a stronger sense of where they're heading.

Key Outcomes

Academic Clarity

By exploring their subject in depth and applying it to real-world contexts, students gain clearer insight into whether it's the right path. This helps guide future course choices, university applications, or career plans.

Confidence & Communication

Through presentations, discussions, and group projects, students build confidence in expressing ideas and thinking on their feet. Many leave feeling more self-assured and ready to contribute and lead.



Global Perspective

Living and learning with students from around the world fosters open-mindedness, cultural awareness, and lasting friendships—broadening their view and sense of belonging.

University Insight

Experiencing life on campus, and visiting another university to compare, gives students a real sense of what's ahead. It's a chance to ask questions and make informed decisions.

Personal Growth

In two weeks, students often discover new strengths and shift their mindset. With structure and independence, they become more resilient, reflective, & ready for what's next.

Dates, Courses & Fees

Join Us Next Summer

Our programmes take place at the University of Bath, with clear course options and structured dates to support planning.

How to Book:

- ✦ Submit an enquiry or request to hold a place
- ✦ Speak with a Sapphire advisor or approved agent
- ✦ Receive full joining instructions and onboarding support
- ✦ Confirm your place with a deposit

We've kept things simple, all courses take place at one inspiring location, and our team is here to support you through the booking process from start to finish.

Pre- University Scholars (14-18)

<i>Location</i>	<i>Courses Offered</i>	<i>Dates</i>	<i>Fees</i>
University of Bath	Psychology, Marketing & Leadership	05 – 18 July	
	Business, Entrepreneurship & Start-Up	19 July – 01 August	£4,500
	Medicine, Health & Innovation	02 – 15 August	
	Computer Science AI & Machine Learning		
	Engineering, Design & Sustainability	Same as above	£4,900

Future Scholars (12-14)

<i>Location</i>	<i>Courses Offered</i>	<i>Dates</i>	<i>Fees</i>
University of Bath	STEM Pioneers	05 – 18 July	
	Business Pioneers	19 July – 01 August	£4,500
		02 – 15 August	

Each course runs for two weeks. Prices shown are for a two-week course. Fees include transfers from Bristol, London Heathrow and London Gatwick.

Let's Shape What Comes Next

Choosing the right summer programme isn't just about the location or the timetable. It's about trust in the people, in the experience, and in the value it will bring to your future.

At Sapphire, we create more than just courses. We offer students the space, structure and challenge to think differently, explore deeply and move forward with clarity. From classroom sessions to campus life, from evening reflections to industry visits, every moment is designed to spark something lasting.

Whether you're just beginning to explore your interests or refining your direction for university, this is a space to learn, discover and grow.

Together, we'll shape a summer that inspires, challenges and stays with you for years to come.

Contact Details

[admissions@
sapphireeducation.co.uk](mailto:admissions@sapphireeducation.co.uk)

+44 1225 808557

[sapphireeducation.co.uk](https://www.sapphireeducation.co.uk)



Scan to
enquire or
book





sapphireeducation.co.uk

